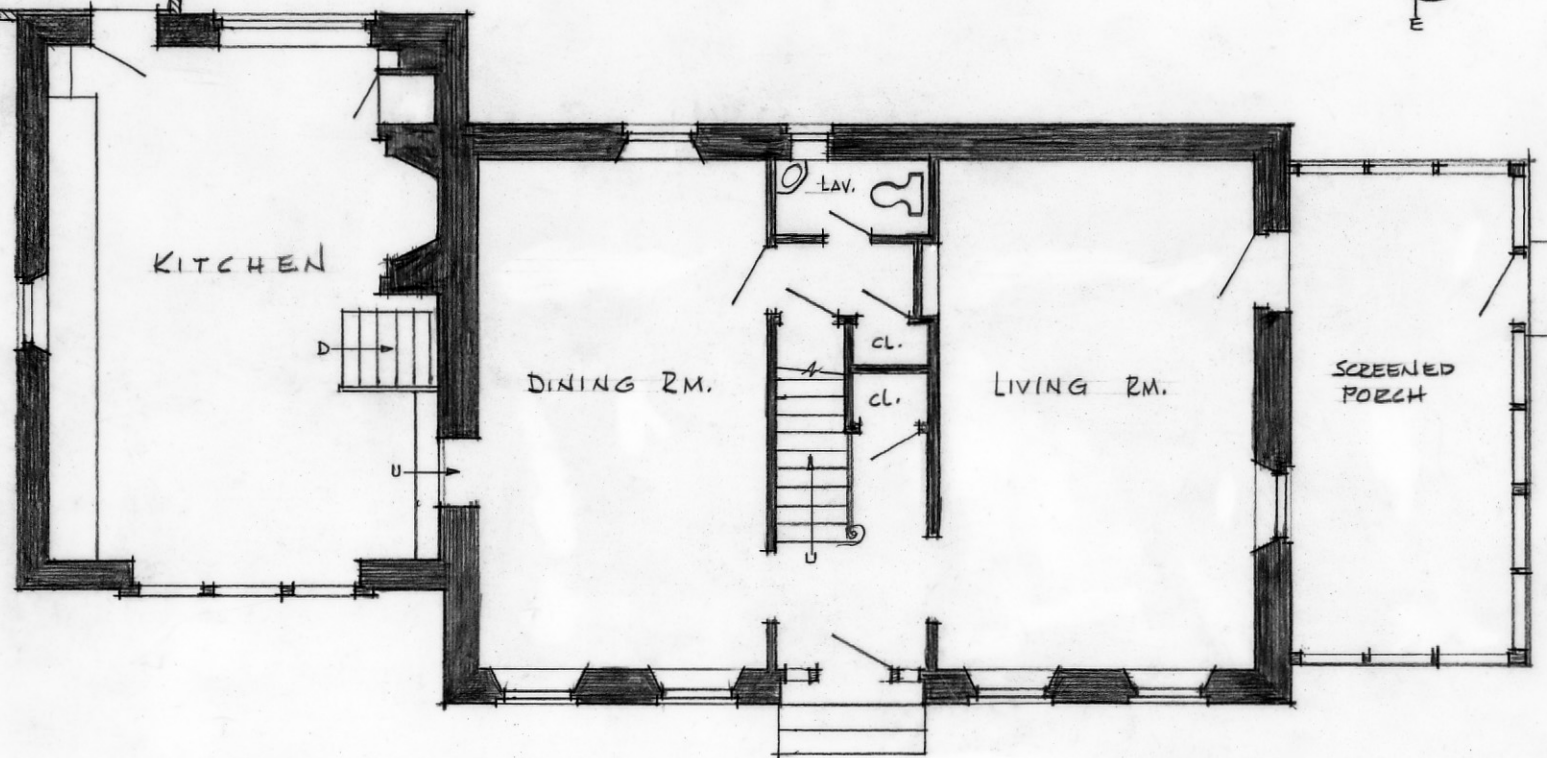
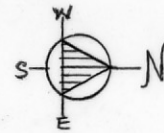


ADDITION



The Resource Center
THE COBBLESTONE SOCIETY
Albion, New York

from RESTORATION & PRESERVATION by Schmidt
FIRST FLOOR PLAN 1/8" = 1'

Cobblestone Farmhouse (Thomas Welch house)
East Williamson (Marion-Williamson) Road
Town of Marion, Wayne County, New York